

ScanSnap

Color Image Scanner

S510

Transforming How Documents Are Managed



Fast double-sided colour scanning at 18 pages per minute

One button scanning to PDF or JPEG

Organize and search documents and business cards

Scan documents directly to Microsoft Word, Excel, or PowerPoint

NEW Scan to email and scan to Print functions

Microsoft Windows Vista™ compatible

Space saving, portable design

Productivity Software Bundle:

- Adobe Acrobat 8 Standard
- ScanSnap Manager v4.1
- ScanSnap Organizer v3.1
- PFU CardMinder v3.1
- ABBYY FineReader OCR for ScanSnap v3.0
- ABBYY PDF Transformer v2.0 Trial Version

ADOBE® ACROBAT® 8 STANDARD



Powered by FineReader.
 ABBYY™ FineReader™ 7.x Engine© ABBYY Software House 2005.
 OCR by ABBYY Software House. All rights reserved.
 ABBYY FineReader are trademarks of ABBYY Software House.

FREE 1 Year Warranty Plus Exchange



THE POSSIBILITIES ARE INFINITE

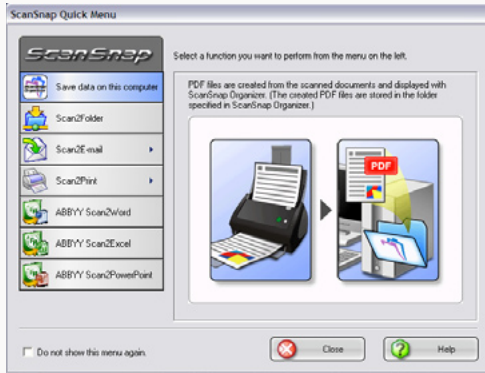
Fast Duplex Colour Scanning

- 18 doubled sided pages per minute. (36 images per minute)
- 50 page automatic document feeder.

User Friendly & Convenient

- Scan to PDF or JPEG with one touch.
- Auto detects paper size: business card to legal.
- Auto corrects skewed images.
- Auto deletes blank pages.
- Automatic page orientation.
- Auto detects black & white or colour documents.

NEW Easy to use "Quick Menu"



Organizes Documents & Business Cards

- Manage your scanned documents and conduct quick searching with ScanSnap Organizer.
- Automatically convert scanned images to text searchable PDF.
- Automatically extracts contact information from business cards. Export card data to popular contact management software.
- Scan to email: PDF or JPEG attachments.

Scan Documents into Microsoft Office

- With ABBYY FineReader for ScanSnap, scan directly into Word, Excel, or PowerPoint: Document editing with familiar tools.

Space Saving, Portable Design

- Approximately 12" wide, 6" high, and 6" deep.
- Security Port to lock down scanner.
- Portability - ScanSnap carrying case available.

Warranty Plus

- 1 year premium warranty coverage.
- Advance exchange anywhere in Canada.

Visit www.fujitsu.ca/scansnap for more detail.

The Fujitsu ScanSnap S510 bridges the paper and digital worlds allowing fast and flexible capture of paper-based information into high quality PDF image files.

ScanSnap is compact and powerful; a complete 'out of the box' solution for managing your documents. The scanner comes bundled with full featured software giving you the ability to archive, search, edit and share your documents and business cards.

ScanSnap is so simple and easy to deploy, and requires no special user training. The scanner not only enhances productivity, but also empowers the individual. Imagine, with the touch of a button, documents are automatically scanned and saved, and when desired can be effortlessly shared and

distributed to colleagues, customers, or suppliers. ScanSnap can save directly to any hard drive: even network drives!

ScanSnap bridges the gap between the paper and digital worlds in a convenient and productive manner.



TECHNICAL SPECIFICATIONS

Scanner type	ADF (Automatic Document Feeder); Duplex colour scanning								
Scanning modes	Colour / Black & white / Automatic (colour/black & white detection)								
Scanning speed¹	<table border="0"> <tr> <td><i>Normal mode</i></td> <td>18 pages/min. (duplex / simplex, colour 150 dpi, black & white 300 dpi)</td> </tr> <tr> <td><i>Better mode</i></td> <td>12 pages/min. (duplex / simplex, colour 200 dpi, black & white 400 dpi)</td> </tr> <tr> <td><i>Best mode</i></td> <td>6 pages/min. (duplex / simplex, colour 300 dpi, black & white 600 dpi)</td> </tr> <tr> <td><i>Excellent mode</i></td> <td>0.6 pages/min. (duplex / simplex, colour 600 dpi, black & white 1200 dpi)</td> </tr> </table>	<i>Normal mode</i>	18 pages/min. (duplex / simplex, colour 150 dpi, black & white 300 dpi)	<i>Better mode</i>	12 pages/min. (duplex / simplex, colour 200 dpi, black & white 400 dpi)	<i>Best mode</i>	6 pages/min. (duplex / simplex, colour 300 dpi, black & white 600 dpi)	<i>Excellent mode</i>	0.6 pages/min. (duplex / simplex, colour 600 dpi, black & white 1200 dpi)
<i>Normal mode</i>	18 pages/min. (duplex / simplex, colour 150 dpi, black & white 300 dpi)								
<i>Better mode</i>	12 pages/min. (duplex / simplex, colour 200 dpi, black & white 400 dpi)								
<i>Best mode</i>	6 pages/min. (duplex / simplex, colour 300 dpi, black & white 600 dpi)								
<i>Excellent mode</i>	0.6 pages/min. (duplex / simplex, colour 600 dpi, black & white 1200 dpi)								
Paper size	Automatic paper size detection from business cards up to Legal size. Use of a ScanSnap Carrier Sheet permits the scanning of 11"x17" and photographs as well as other sizes not listed above.								
Paper weight	14 to 34 lb.								
Feeder capacity	Maximum 50 sheets (letter, 20 lb.)								
Interface	USB 2.0 (USB 1.1 compatible)								
Driver²	ScanSnap Manager (TWAIN / ISIS™ not supported)								
Output formats	PDF or JPEG								
Dimensions³	284 mm (width), 157 mm (depth), 158 mm (height)								
Weight	2.7 kg								

SYSTEM REQUIREMENTS⁴

Operating system	Windows® 2000 Professional®, Windows® XP®, or Windows Vista™ (32-bit)
CPU	Intel® Pentium® III 600 MHz or higher (Intel® Pentium® 4 1.8 GHz or higher recommended)
System memory	256 MB or higher (512 MB or higher recommended)
Hard disk capacity	At least 1.7 GB necessary for installation
Optical drive	A CD-ROM drive required for software installation
Interface port	USB 2.0 / USB 1.1 port

IN THE BOX

Hardware	ScanSnap S510 unit USB cable (2 m) AC adapter ScanSnap Carrier Sheet Getting Started Guide
Bundled software	ScanSnap Manager v4.1 ScanSnap Organizer v3.1 PFU CardMinder™ v3.1 Adobe® Acrobat® 8 Standard ABBYY FineReader for ScanSnap™ v3.0



As an EnergyStar® partner, Fujitsu has determined that this product meets the EnergyStar® guideline for energy efficiency.

1) Scanning speeds may vary due to the system environment used.
2) TWAIN or ISIS™ applications cannot be used directly. These applications can be launched by ScanSnap if they support PDF or JPEG file types.
3) Stacker external attachments excluded.
4) Scanning speed slows down when recommended requirements are not met.
5) With Service Pack 4 or higher.
6) With Service Pack 2 or higher.

Fujitsu and the Fujitsu logo are registered trademarks of Fujitsu Limited. ScanSnap is trademark of PFU Limited. Adobe, Acrobat, Adobe PDF logo are either registered trademarks or trademarks of Adobe Systems Incorporated in the United States and/or other countries. All the other trademarks mentioned herein are the property of their respective owners. Specifications are subject to change without notice. © 2007 Fujitsu Canada, Inc. All rights reserved. FCI-10.25.2007-E



MultiCIM Technologies Inc.
640 Bord du Lac/Lakeshore, suite 101
Montréal, QC CANADA H9S 2B6
T : (514) 633-6401 or 1 (877) MULTICIM
F : (514) 633-6495
sales@multicim.com



THE POSSIBILITIES ARE INFINITE